

WELCOME TO

THE CLASS OF 2031



CENTRAL

M I D D L E S C H O O L

We Can't Wait To Meet You!

**Dr. Eikel,
6th Grade Principal**



**Dr. Lorenz,
Building Principal**

**Mrs. Besand,
6th Grade Counselor**



2023-2024

6th Grade Registration

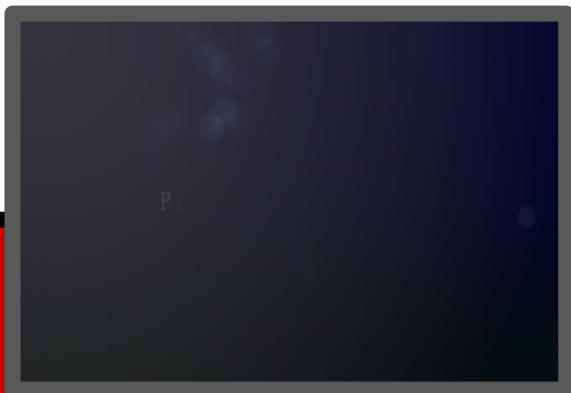
Core Subjects & P.E.

- English Language Arts (ELA)
(Reading/Writing)
- Integrated Science
- World Geography
- Math 6 or Math 6/7
- Physical Education & Health 6

Electives & Advisory

- Music: Band, Orchestra, Choir
- Personalized Pathways
Global & Cultural Connections
Art Business
Theatre Engineering
 FACS
- Advisory

6th Grade Music Electives (choose 1)



CHOIR



BAND



**Orchestra &
Cadet Strings**



Personalized Pathways: Elective Options

*One elective course with 4 rotations.
Each rotation meets for ¼ of the school year.*

Career & Tech Ed (choose 1):

- Engineering Endeavor
- Family & Consumer Science (FACS)
- Business & Technology Introduction

Fine Arts (choose 1):

- Visual Arts Discovery
- Exploring Theatre

Global & Cultural Connections

- Required and Fun!

Bonus Choice!

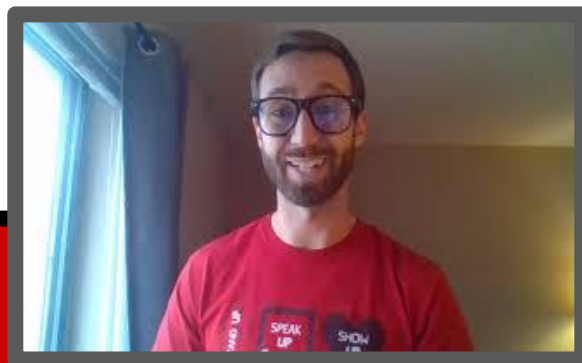
- Any class to the left not already chosen

Personalized Pathways: Career/Tech Options



Introduction to Family and Consumer Science

Ready, Set, Explore FACS! This class will explore the careers related to Human Services, Hospitality & Tourism, Education and Training, and Apparel & Textile Design while giving students the opportunity to build communication, collaboration and critical thinking skills. This project based class includes career exploration related to cooking, sewing, planning, goal setting & teaching.



**Family &
Consumer
Science**



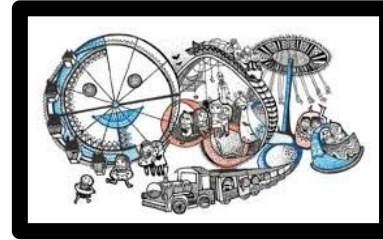
**Business &
Technology
Introduction**



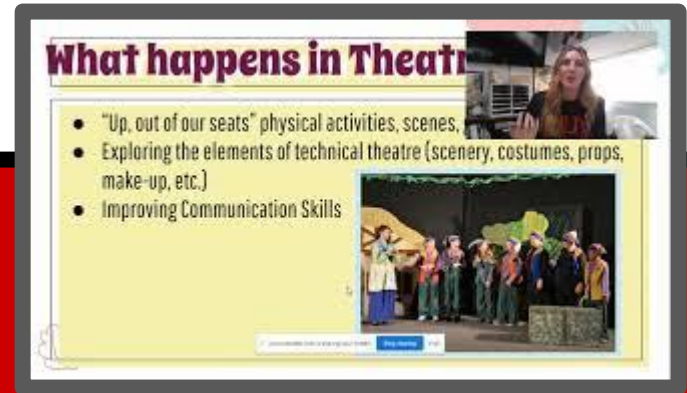
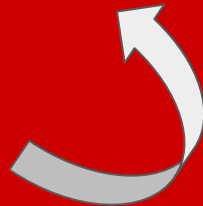
**Engineering
Endeavor**



Personalized Pathways: Fine Arts Options



Visual Arts
Discovery



Exploring Theatre



Personalized Pathways: Global & Cultural Connections (Required)



What is this class
is all about?

Why does Parkway offer
language learning?

The Academies of PCMS

PC-Legacy



PC-Flex



PC-Empower



PC-Design

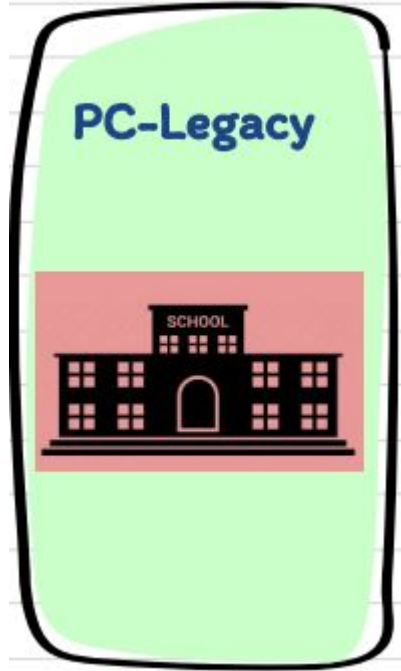


Choose which learning environment is the best fit for YOU!

Questions to ask yourself (and discuss with your family):

- What type of Learner am I?
- What makes school fun for me?
- How do I like to show what I know?

Legacy Academy



- Do you like a structured school day with a consistent schedule?
- Do you like the excitement of getting new teachers each year?
- Do you like the variety of activities your teachers currently use to help ensure your academic success?



Flex Academy



- Do you enjoy having some control over the pace of your learning?
- Do you want the flexibility to push forward when you have momentum on a task?
- Do you make good use of time when working independently or in small groups?



Empower Academy



- Do you want to know yourself better as a learner?
- Do you see yourself becoming increasingly self-directed as a learner?
- Do you wish to have increased voice and choice in your learning?



Design Academy



- Are you motivated by curiosity, creativity, choice, flexibility, and personal growth?
- Are you willing to jump into the role of co-creator of your learning experience?
- Do you feel deeply about issues and problems around you? Are you motivated to develop new solutions?





Important Notes on Academies:

- Legacy will consist of two 6th-grade-only teams; Flex, Empower, & Design will be multi-grade.
- All Academies are mixed for lunch, electives, & PE/Health
- All Academies are inclusive of ALL students
- All Academies will prepare you for high school
- You will rank all 4 Academies in order of preference when you register for classes

Registration Open on Friday, January 5th!

[PCMS '24-'25 Course Guide & Registration Information](#)



['24-'25 Sixth Grade Registration Google Form](#)

Google form DUE Friday, January 19th!

More Fun PCMS Facts!

- Not as big as it seems: 6th grade classes are located close together
- Hall passing time is 3 minutes
- You get a locker! You can start practicing with a lock now
- 6th Graders all eat lunch together and there is great food and lots of options- including snacks!
- Fun intramurals and after school activities

Important Upcoming Dates!

- January 4th- Parent Night at PCMS (5:30-8:00pm)
- January 19th- Registration Google Form DUE!
- April Elementary Visits to PCMS
- May 30th- Last day of 5th Grade
- August 14th- Schedule available in Infinite Campus
- August 16th- 6th Grd. Orientation morning at PCMS
- August 19th- First day of Sixth Grade!

We Can't Wait to See You in April!



Welcome to the Colts Caring Community!